

Q7

INSTRUCTION

Read user manual carefully in order to protect the user's safety
and ensure the accurate use of the product.
Contents of the manual might be modified without prior notice.

IRDAD

Made in Korea

JAEWONCNC

BEFORE USING

USER INFORMATION.....	1
PRECAUTION	2~3

PRODUCT INFORMATION

PRODUCT OVERVIEW.....	4
PACKAGE COMPONENT	5
NAME OF EACH PART	6
SPECIFICATION	7

SETUP

INSTALLATION	8~9
UNINTERRUPTED FUSE CABLE	10

USING THE DEVICE

PRODUCT OPERATION	11
RECORDING MODE	12
VIDEO FOLDERS IN SD MEMORY CARD	13
FIRMWARE UPDATE	14~16

DEDICATED PC VIEWER

INSTALLATION & RUNNING THE VIEWER..	17
OVERVIEW	18
WATCHING FRONT/REAR VIEW	19
ENLARGING THE SCREEN	20
OSD SETTINGS & OSD	21
THUMBNAIL/DRAWING A LANE	22
BACKUP	23
SYSTEM CONFIGURATION	24
EVENT SETTINGS	25
ADAS SETTINGS	26
USER SETTINGS	27
PORTABLE DISK	28
VERSION INFO	29

SYNCING WITH Wi-Fi

30

SMARTPHONE - Android

CONNECTING TO A SMARTPHONE ...	31~32
MAIN MENU/REAL-TIME SCREEN	33
LIST OF RECORDINGS & FRONT/REAR PLAYBACK	34
SETTINGS - CAMERA, TIME	35
SETTINGS - SYSTEM, ADAS	36
SETTINGS - EVENT, INFO	37

SMARTPHONE - Apple iOS

CONNECTING TO A SMARTPHONE	38
REAL-TIME SCREEN/MAIN MENU	39
LIST OF RECORDINGS & FRONT/REAR PLAYBACK	40
CAMERA/EVENT SETTINGS	41
POWER CONTROL/ADAS	42

TROUBLESHOOTING

43

THANK YOU FOR CHOOSING JAEWONCNC IROAD VEHICLE RECORDER.

This manual contains how to operate product and guide you to use correctly, Please read carefully before using product.

This manual is based on IROAD Q7 model. Please be informed that there might be some unintended errors.

Contents of the manual might be modified without prior notice.

■ Guarantee and Supporting

- Please visit our website at <http://www.iroadkr.com>
- Dedicated viewer, latest firmware and other product information are available for download from the website.
- JAEWONCNC is not responsible for any problem that occurs if the device is used or obtained illegally.
- Though this product records and saves footages in the event of accident, it does not guarantee every single accident scenes are fully recorded.
- Accidents scenes may not be recorded if there is minor impact on the vehicle so that the impact sensor cannot detect.
- The recordings obtained from the product might be used as a proof of accident. However, JAEWONCNC will not be responsible for any gain or loss caused by the accident.

■ Copyrights and Trademark

- This manual is legally protected by copyrights, all copyrights reserved to JAEWONCNC.
- This manual is the property of JAEWONCNC, no one is allowed to attempt to make an unauthorized copy, edit and translate the manual.
- IROAD is the trademark of JAEWONCNC. JAEWONCNC has rights to IROAD (Name, Design, Brand image), any unauthorized use of IROAD will results in prosecution.

■ Voltage Related Issues

- Please make sure to use recommended/stable voltage only. Otherwise, misusing may cause product failure and fire accidents, explosion or damage to the vehicle.
- Do not arbitrarily disassemble and modify the product. Otherwise it might cause damage of the product and electric shock. It should be considered user's fault and void the warranty.
- Make sure that the power cable is not cut or damaged when attaching other electronic gadgets on the vehicle, otherwise it can cause product failure or danger of electric shock, and please use qualified power cable which is produced by JAEWONCNC.
- It is highly recommended not to arbitrarily connect the uninterrupted power cable to vehicle as it can cause malfunction of the product by different conditions of vehicle and surrounding environments. (Please contact professional engineer if you needs to install it).

■ Installation

- Do not mount Vehicle Recorder on where sight might be disturbed. It may cause an accident.
- Connect all the cables provided into right slots. Misusing would cause malfunction.

■ The Right Use

- Do not use Vehicle Recorder while driving. Park vehicle in safe place to use it.
- Do not force a product or its lens, otherwise it may cause product malfunction.
- Keeps the device away from flammable or explosive stuff causing explosion and fire.
- Do not cover the device with fabric or other tools. Malfunction or fire would cause once it is overheated.
- In case the device is used for too long, it could cause skin burns.
- The quality of image could deteriorate while the car is passing through tunnel or at very dark night with no light.
- Recording quality might be reduced by excessive tint.
- Image quality could deteriorate when the temperature of the device exceeds the optimal operating temperature.

■ Management

- Turn Recorder off when exposed to direct sunlight or used for too long. Otherwise, malfunction or breakdown would occur.
- Please check whether the device is working before driving a car.
- Do not remove SD card or turn off the power cable during the firmware update. It may cause malfunction or loss of data.

■ Memory Card and Precaution

- There is the lifetime of memory card for rewriting which is expendable product.
Some errors could occur if the lifetime of memory card reached or being stayed in high temperature environment, Periodic care is required.
- The device must be turned off when ejecting memory card.
It may cause to erase data or malfunction of memory card when forcing switch-off while it is running.
- Keep memory card in case all the time when not in use, Please avoid places where is humid and very hot.
- Genuine IROAD memory card is recommended, Failure to use a genuine one may cause error or malfunction of product.
Memory card is expendable, Memory card' s warranty is 6 month period after purchase.
It may cause to reduce life cycle of memory card if using with constact power cable.
- Please format a memory card 2 times every month for its stability.
(Format function supported by a dedicated viewer is recommended)
- Product is only permitting recording files and V9 program, any other files will be deleted in order to keep stability.
(Please use the SD card for the product only, otherwise it will be deleted.)
- It takes up to 5 minutes depending on the memory capacity to use SD card if is the first time of using it.
Please do not remove the SD card while the device is running or when it is being turned off.

4. PRODUCT OVERVIEW



High Definition Vivid Front/Rear HD 2CH

Front camera has Full HD 1920x1080 30 frames
Rear camera has HD 1280x720p 30 frames



Wi-Fi Support

Real time view and playback is supported via Wi-Fi.
Settings and automatic upgrade is supported.



ADAS - Advanced Drivers Assistance Systems

Lane Departure Warning System (LDWS)
Front Collision Warning System (FCWS)
Front Vehicle Departure Warning (FVDW)



SAFEGUARD for All Your Safety

Automatic low voltage cutoff function is embedded
in the device for the safety of the car battery.



Memory Card Automatic Recovery Function

In case any error occurs,
data is automatically recovered.



Night Vision

Specialized more clear and sharp recording
at night time



Variable Recording Mode

Automatic Parking Mode and Motion Detection function
Impact, 24 hours Recording Mode



High Intensity Security LED

High intensity LED makes it possible to check outside
whether product is working.
So as to prevent beforehand vehicle theft and accident.



Voice Recording & Voice Guidance

High quality Sound Recording
Clearer Voice Guidance by built-in speaker



External GPS

Driving information through external GPS
Time, driving path, direction with recorded video



Dedicated PC Viewer & Smartphone Playback

Playback recorded data,
set various functions on dedicated PC viewer.
Playback on PC and Smartphone playback available



Firmware Update

Continuous improvement and performance
maintain product stability.
Easy and simple upgrade through website
www.iroadkr.com or smart directly

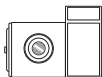
5. PACKAGE COMPONENT

Basic Components

- The picture of this package may differ from the real.
- The images of components can be different from the real and some can be changed.



Front Camera



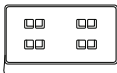
Rear Camera + Cradle



Uninterrupted Fuse Cable



User Manual



Cradle



IROAD Genuine Micro SD



Rear Camera Cable

Optional Products

- The picture of this package may differ from the real.
- The images of components can be different from the real and some can be changed.



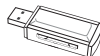
Wi-Fi Dongle



Cigar Jack Power Cable

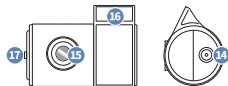
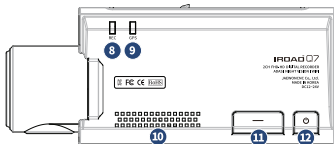
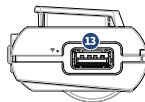
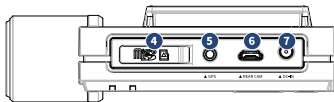
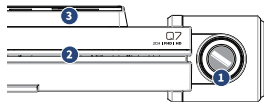


External GPS Antenna



SD Card Reader

6. NAME OF EACH PART



- | | | | |
|--------------------------|----------------------------------|-----------------------------------|----------------------------|
| 1 Camera lens | 6 Rear Camera Cable Slot (V-IN) | 11 Wi-Fi User Registration button | 14 Front camera cable slot |
| 2 Security LED | 7 Power Connector (DC-IN) | 12 Power button | 15 Camera lens |
| 3 Transparent cradle | 8 Wi-Fi User Registration button | 13 Wi-Fi USB Slot | 16 Transparent cradle |
| 4 Micro SD Card Slot | 9 External GPS Connector | | 17 Security LED |
| 5 External GPS Connector | 10 Speaker hole | | |

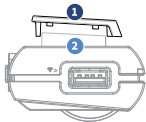
7. SPECIFICATION

• Specifications above can be changed without prior notice in order to improve performance of the product.

Model	IROAD Q7
Image Sensor	SOI 2.0Mega Image Sensor
CPU	ARM Cortex-A7 MP Core Processor V40
Resolution/Frame/Viewing Angle	Front:1920x1080 30fps 142° / Rear:1280x720 30fps 125°
Wi-Fi	Wi-Fi supported – Smartphone playback/settings, Firmware automatic upgrade
Wi-Fi Button	Registration stand-by mode ON/FF, Voice recording ON/OFF
ADAS	LDWS, FCWS, FVDW
Audio Input	MIC embedded
Video/Audio Compression	H,264 / ADPCM
Vibration Sensor	3-axis acceleration sensor (Start recording when it senses external impact)
External GPS Sensor	Synched with Google map, inform the location and travelling speed of the vehicle.
Storage Medium	Micro SD 16GB ~ 64GB (MLC Class10)
Recording Mode	Driving, Event(Impact), Parking(Motion detection)
Uninterrupted Power	Low voltage cut-off, overheating prevention is embedded
Power Supply / Power Consumption	DC 12V ~ 24V / 2.6W
Operating Temperature/Humidity	-30 ~ 80°C (Storage temperature : -30 ~ 90°C) / 10 ~ 95%
LED	Security LED embedded
Viewer	IROAD Q7 Viewer : Windows Xp, VISTA, Win7, Win8 (32Bit ~ 64Bit support)
Application	IROAD App (More than Android 2.3, iOS 9.0 and higher version)

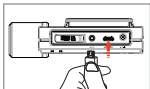
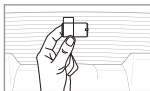
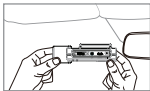
8. INSTALLATION

■ Mounting a cradle for front camera



- Fit push chase (1) from the cradle aside into hole (2) of the top of main body.

■ Product Installation



1. Use soft cloth to wipe out the spot where the product will be attached
(Wipe out with soft cloth or tissue)
2. Attach product
(Remove the protective film from the adhesive tape of front/rear camera)
3. Connect the cable of rear camera
(Connect the rear camera cable V-IN slot)

Please make sure the cable connector is very tight that should be installed or removed more carefully

■ Placing cameras



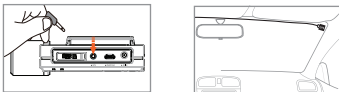
- Use dry fabric to wipe out the spot where the product will be attached on the windshield.
- Make sure to install the product on where sight is not disturbed.

■ Product Installation



4. Connect power cable to DC-IN slot
5. Other side of cable connect to vehicle fuse or cigar jack power
In order to install uninterrupted power cable, refer to the website www.iroadkr.com or look at this instruction page 10
6. Make sure that the product is operating normally
7. Clean up the power cable and rear camera wiring with cable holder or using edge part of vehicle

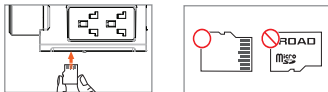
■ Connect External GPS



Connect external GPS to GPS slot of the top
It provides vehicle speed, location and other additional
information if connect external GPS

Please make sure to have some distance
between main product and GPS

■ Inserting SD memory card



- Make sure to insert sd card in the right way

Push the sd card into the memory card slot until you hear clack sound.

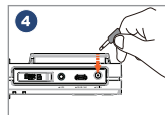
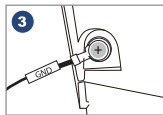
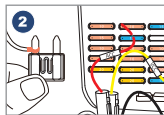
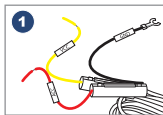
When using memory card for the first time or when the memory
card is reused after format. The system will be in standby mode for
3~5 minutes to create system files and checking the memory card.

Recording starts with voice guide saying "Start recording"

■ Uninterrupted Power Function?

It prevents battery discharge beforehand while in parking mode. The uninterrupted power function ensures your battery is protected. The discharge of battery voltage will be prevented in advance for 24 hours if the battery level goes down the minimum preset level. (There might be able to occur natural battery discharge caused by the long term parking hours or each vehicle status. Please change voltage level up to high especially in winter season, refer to the instruction).

■ How to Install Uninterrupted Fuse Cable



- 1 Find right fuse using electric tester from fuse box of the vehicle.
- 2 [ACC]Line (Red Line) : Make sure engine' s off and connect to a current flowing fuse.
[VCC]Line (Yellow Line) : Connect to fuse which should be not electric current.
- 3 Connect GND line to vehicle itself which has to connect iron part of vehicle itself.
Do not connect bolt of dash board where current is not flowing.
- 4 Connect the power cable to confirm the operation of product, then neatly organize cables to finish installation work.

- Before installation must check for wire color. Sometime switch (VCC,ACC,GND) wire color.
Please refer to website www.iroadkr.com for the details of uninterrupted power installation, contact a technician for accurate installation.

■ Product Operation

Power ON	<ul style="list-style-type: none">- All LED will be turned on when the engine is on.- Normal recording starts along with Voice Guidance.- External GPS LED will be turned off if there is no GPS connection.
Power OFF	<ul style="list-style-type: none">- All LED will be turned off when the engine is off or the constant cable is disconnected.
External GPS	<ul style="list-style-type: none">- GPS LED flickers while external GPS is connected (GPS LED will be on constantly while connected to satellite).- Please recheck the connection if there isn't LED on despite external GPS installed.
Wi-Fi User Registration	<ul style="list-style-type: none">- There is voice guidance to switch to standby mode of "User Registration Mode" if you press Wi-Fi button.- If there is no Wi-Fi request, it will change to normal recording mode(Press the button again to switch standby mode).

■ Recording Mode

Normal Recording	<ul style="list-style-type: none">- It starts recording when power is connected.- Security LED flickers once every 2 Seconds.
Event Recording	<ul style="list-style-type: none">- It will be recorded for event recording mode if it detects any shock(REC LED flickers).- It will return to Normal recording mode after finishing event recording.
Parking Recording	<ul style="list-style-type: none">- It will switch to parking mode if G sensor doesn't detect movement for 5 minutes.- It is recorded with 10 frame in order to extend recording time.- Security LED flickers every 1 second.- Switch to normal recording mode when the car is on the move.
Motion Detection Recording	<ul style="list-style-type: none">- It records if there is any movement within a range of 3 meters distance.- Security LED will blink faster.- If the movement finishes, it returns to parking mode again.

13. VIDEO FOLDERS IN SD MEMORY CARD

■ Saving Directory



Config



Data



Event



Update



Viewer

Config System Managing Folder

- Log.txt : Save product status
- Version.ini : Save version information

Data Normal(Driving) Recording Folder

- Normal recordings are saved. The number of files saved differ depending on the memory capacity.

Event Event(Impact) Recording Folder

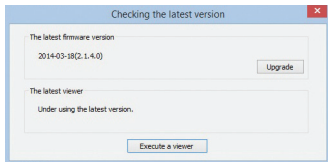
- There are recorded data of event(Impact, parking, movement) recording.

Updata Firmware Folder

- Put the latest firmware here to automatic upgrade.

Viewer Viewer Setup Program

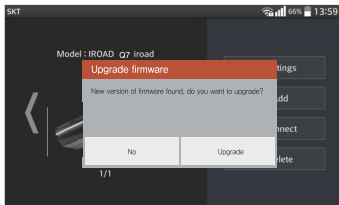
■ Automatic Update via PC Viewer Program



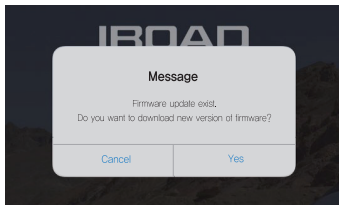
- 1 . Message window pop up as picture shown when install PC viewer program for the first time.
(That can upgrade only when there is internet connection and memory card inserted)
- 2 . If click the upgrade icon of latest firmware tab, it automatically copy upgrade file to memory card.
- 3 . Insert memory card to the product after copying files. Make sure the power of the device is disconnected.
- 4 . Connect power to the product after inserting the memory card and then start the engine.
- 5 . Upgrade starts with LED flickering and voice guidance.
- 6 . The device is rebooted once update is finished

15. FIRMWARE UPDATE

■ Automatic Update on Smart Device via Wi-Fi



[Android Message Pop-up]



[iOS Message Pop-up]

- 1 . Register smart device on [Refer to registration page].
- 2 . Message pop-up window appears when select the product after running IROAD application.
- 3 . Upgrade begins automatically when press upgrade button.
- 4 . Please do not turn off smart device or product power while upgrading.
- 5 . The device is rebooted once update is finished and start recording as usual.

■ Manual Update



Update

- 1 . Disconnect the power cable.
- 2 . Remove SD card from the product, put it into card reader and then insert the reader onto PC.
Once it is done, copy the downloaded firmware to the sd card under the folder named "update".
- 3 . Insert SD card back onto the device.
- 4 . Connect the power cable to the cigar jack.
- 5 . Turn on the engine. Make sure the engine is on.
- 6 . Update starts with LED flickering and voice guidance.
- 7 . The device is rebooted once update is finished.

Program Installation

1. The viewer software is not pre-setup in the memory card.
2. Connect power to the product after inserting Micro SD card. Recording time could differ depending on the capacity of SD card.
3. Take 3~5 minutes to initialize and create the file system when first use.
(All LED flicker while initializing, There will be REC on when it starts recording after finishing)
Insert the SD card onto PC.

4. run viewer.exe which is saved in the memory card.



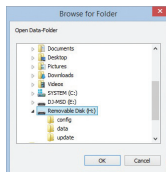
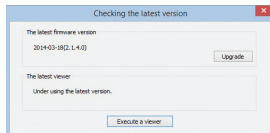
viewer.exe

Running the Program

1. Confirmation pop-up window appears if there is internet connection as picture shown.
If there is no internet connection, IROAD wifi dedicate viewer will run directly.

2. Press "run a viewer" icon to start viewer program.

3. Open File – Click the icon  in the viewer to browse folder window as shown in the picture. Select removable disk, press "OK" button.



■ Overview



- ① Recording File List
- ② GPS signal receiving window
(Start operating when connected to an external GPS)
- ③ G-Sensor(Acceleration) Graph
- ④ Playback speed adjustment
- ⑤ Speed indicator
(Start operating when connected to an external GPS)
- ⑥ Volume Control
- ⑦ Google Map
(Start operating when connected to an external GPS)
- ⑧ Front/rear image playback screen

9 Front/rear image related

	Front/Rear image switch
	Cutting Front/Rear image in half
	Front/rear image PIP
	Color/Black&white mode switch

10 Playback Recording

	Play backwards, Playback
	Pause
	Repeat event
	Previous/Next event
	Step Reverse, Step

11 Video Control

	Thumbnail		Backup
	Drawing a lane		Setup
	Print		Open

19. WATCHING FRONT/REAR VIEW

■ Watching Front/Rear Image



Click the icon to watch front/rear image

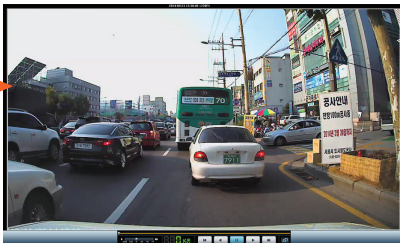


Click the icon to watch both front/rear in half



Click the icon to watch front/rear PIP

■ Enlarging a Screen



Double-click the left button of mouse on the main menu screen to expand to full screen.

Click the left button of mouse to return to previous screen again.

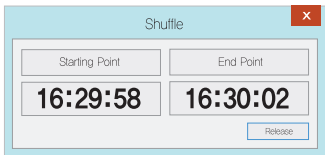
■ Partial Enlargement of a Screen




Magnifier will appear, if double-click the right button of mouse in playback screen. You can move the enlarged screen by pressing the left button of mouse and drag the screen.

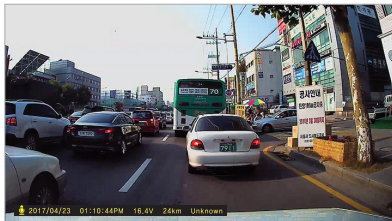
The Magnifier will disappear if click the right button of mouse.

■ Repeating Event Playback




- Click "repeat event" icon  to activate repeat function from the main viewer screen
Section bar is activated.
- Select start and end point to playback repeatedly.
- This function is only available in a playback section.

■ OSD





- Display the information of speed, date and time in the lower left section of the viewer.
- Date and time notation is applied to all of the backup files.

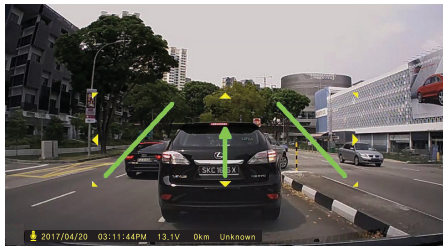
 2017/04/23 01:10:44PM 16.4V 24km Unknown


Thumbnail



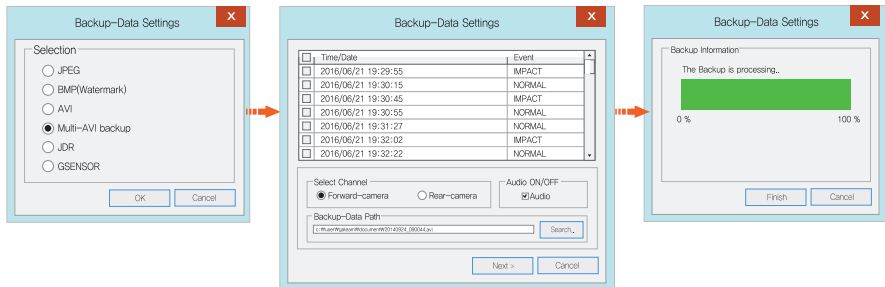
- Switch to thumbnail function if click the icon  in the main viewer screen.
- This screen is composed of 16 pictures in total and each of the screen shows one scene.
- It show enlarged full screen if double-click the specific each of scene.
- Playback, Play backwards also show 1 to 16 pictures sequentially.
- Return back to normal mode if click the icon  again.


Drawing a Lane



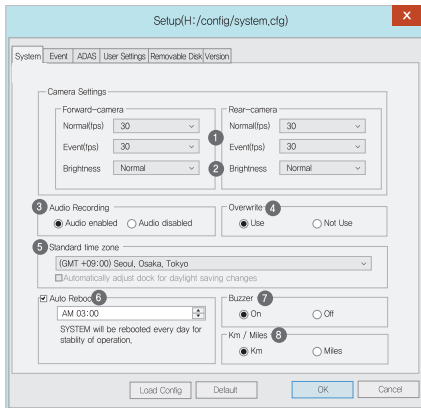
- Click to the icon  to "Drawing a lane" mode.
- User can apply the lane manually.
- Click the icon and choose 'deactivating lane drawing to deactivate it.

Backup



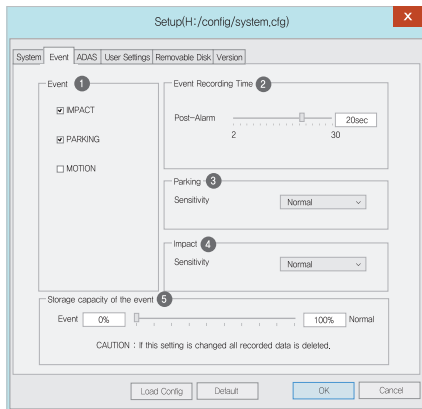
- Click the “Backup” icon  in main screen menu.
- Backup function provides various type of backup such as JPEG, BMP, AVI, Multi-AVI backup, JDR, G-SENSOR.
- AVI video file can be played on Windows Media Player or other Third-party Player.
- JDR Backup can be played back with dedicated viewer only.
- Images can be opened with Image viewer or Microsoft paint.
- Images with AVI, JDR extension – Click backup button after choosing the desired timezone.
- Backup begins after assigning a data path and then choose 'next' button. You may also save audio by ticking 'audio save' button.
- AVI backup is available to use tamper-resistant function.

■ System Setting



- 1 Normal/Event – Setup the frame for 1 second
- 2 Brightness – Adjust the brightness of recording
There are 3 steps such as Darkness / Default /Bright
- 3 Audio Recording – Available to select Enable/Disable audio
- 4 Security LED – Select on/off
- 5 Standard Time Zone – Select exact time zone
- 6 Auto Reboot – Reboot the product when get preset time
in order to check memory card checkup
- 7 Buzzer – Alarm sound when event occur (Available ON/OFF)
- 8 Change distance notation, KM or Miles

■ Event Settings



- 1 Event – Activate/Deactivate Impact/Parking/Motion function
- 2 Event Recording Time
 - Recording after event: Setup the recording time after event happened (Available between 2~30 seconds)
- 3 Parking – Set the sensitivity while in parking mode(G-Sensor)
- 4 Impact – Set the sensitivity (G-Sensor)
- 5 Storage Capacity of the Event – Set the capacity of Event and Normal recording

■ ADAS Settings

Setup(H:/config/system.ctg)

System Event **ADAS** User Settings Removable Disk Version

ADAS(Advanced Driver Assistance Systems)

1 ADAS Function

Use
 Not Use

2 LDWS

Use Not Use

3 FVDW

Use Not Use

4 FCWS

Use Not Use

Lane Departure Sensitivity Detection

5 Sensitivity : Basic

Collision Sensitivity Detection

6 Sensitivity : Basic

Lane departure Speed Detection

7 Speed : 50km/h

Load Config Default OK Cancel

- 1 ADAS Function : Use / Not Use
- 2 LDWS : Use / Not Use
- 3 FVDW : Use / Not Use
- 4 FCWS : Use / Not Use
- 5 Sensitivity of LDWS – Select Low, Basic, High
- 6 Sensitivity of FCWS – Select Low, Basic, High
- 7 Speed of Lane Departure – Select 50, 60, 70km/h

User Settings

Setup(H:/config/system.ctg)

System Event ADAS User Settings Removable Disk Version

Vehicle Info

Vehicle info 1

Driver Info 2

License plate No 3

User Info 4

User ID admin

Password

LBP 5

Power On 12.4V 12.7V 12.9V 13.1V 13.3V

Power Off 11.3V 11.5V 11.8V 12V 12.3V

Time set 6

2014-09-24 PM 03:18

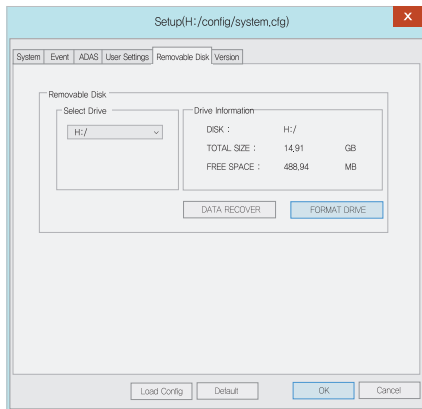
불러오기 기본값 확인 취소

- 1 Vehicle Info – Save vehicle information
- 2 Driver Info – Save drivers information
- 3 Serial Info – Enter product serial number
- 4 User Info
 - No one can check the information if set password here.
 - User ID – Enter login ID (Default: admin)
 - Password – Set password for login (Default–None)
- 5 LBP(Constant power/Low voltage cut-off function)
Voltage discharge prevention function
 - Adjust the optimal voltage for the safety of your car
- 6 Time setting
Set the exact time if not connected to an external GPS.
Set the time few minutes ahead considering travelling distance between PC and your car.

This is a personal information area. Please keep secure for information leaking.

Be aware that you won't be able to watch images if you fail to login when password is forgotten.

Portable Disk



This function is for format or recover memory card when there occur errors or other problems, Please consider data loss before work, so it is necessary to backup in advance

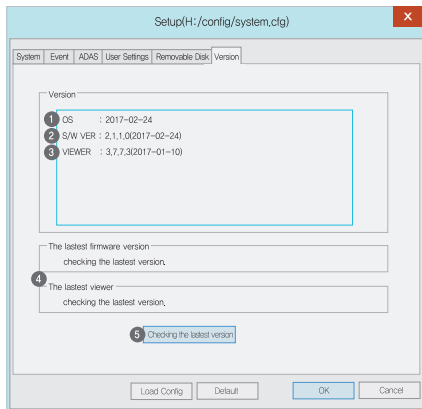
- Select the right drive for SD memory card
- Select the function
- All of data will be deleted if format the drive

The performance of memory card could be slowed when used for too long.

Properly managing sd card is important,

Please format or check the memory card once a week or 2~3 times a month in order to keep stable recording condition and long memory card use.

Version



- 1 OS – Display OS information of product
- 2 S/W VER – Display Software information
- 3 VIEWER – Display viewer version information
- 4 Latest Firmware / Viewer
- 5 Click "Checking the latest version" to confirm the latest program version for the product.

- Make sure the internet is connected before firmware upgrade.
- If downloaded the firmware without SD card, Please copy the firmware file to "Update" folder directly.

■ IROAD Smart Manager Application

- It provides Android and iOS platform.
- Please search "IROAD" on Google Play Store or App Store.



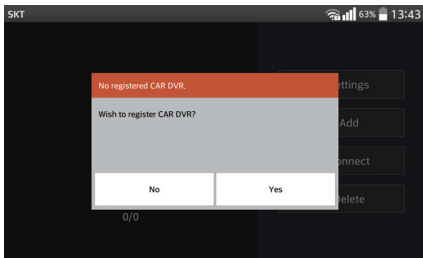
■ Before Using It

- Real-time recording and playback via Wi-Fi could be delayed depending on specification of Smart device.
- Do not handle the product while driving, it causes some serious accident, (Please operate the product in safe place after parked)
- Wi-Fi USB Dongle is sold separately.
- Press Wi-Fi button on the device and check if guidance voice ("Registration standby mode") is played.
- Check the reception of Wi-Fi or settings on your smartphone if your phone is unable to detect the device.
Please retry by pressing "Off" of pass point in "Wi-Fi advanced setting" menu, if that value is "On".
Please retry with the value of "All" in "Wi-Fi Signal Strength" menu.
- There could be dropouts of Wi-Fi signal depending on receiving sensitivity.
- Recommend to connect inside vehicle for stable usage.
- Frames when files are saved may differ on WiFi depending on which smartphone is used.
When Wi-Fi is off, the frames return to normal frame.

How to Connect - Android



– Run IROAD app icon after installation to smart device.

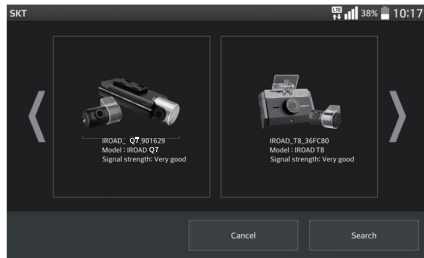


STEP 1

The screen of IROAD app is shown horizontally.

Appears to guide registration when first use as left picture.

If select "No", it terminates the application,
or select "YES" to go product registration page.

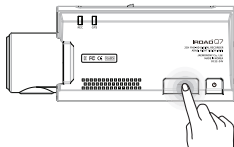


STEP 2

A device close to the smartphone is searched and shown on the screen.

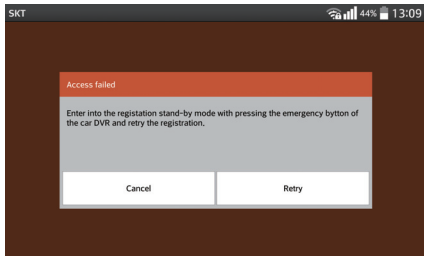
– The image, SSID and the name of model of the device found are shown.

How to Connect - Android



STEP 3

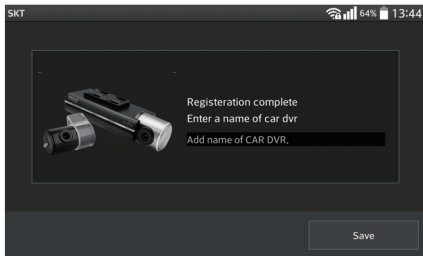
Press the Wi-Fi registration button of product, there will be voice guidance and select the product on the list that you want to register by tapping on "Search" button, Press "Search" button if you want to search the device again, The registration has to be done within 2mintues.



STEP 4

In case of registration is not active or connection is failed in standby mode, voice guidance is played.

Press Wi-Fi button to activate registration mode again,
(If re-registering, it automatically registers last installed smartphone)

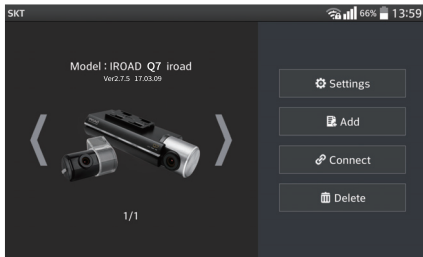


STEP 5

Registration process is finished as right picture shown above.
Register DVR name, it can be useful when you need several product connections.

33. SMARTPHONE - ANDROID

Main Menu / Real-time Image



Main Menu Overview



Tapping on the setting button let you change settings simply & easily.(Once change is saved, the app is rebooted)



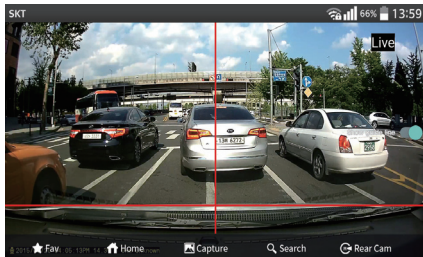
Pressing "Add" button will navigate to the camera registration page.



Real time image is shown after Pressing "Connect" button.



Click "Delete" button to delete existing camera info.



Real Time Image Menu

- Click on the picture of the device to watch real-time image.
- Tap on the screen gently to view settings menu on the bottom.
- Magnifying glass disappear by double clicking right mouse.
- To more clear ADAS use, Touch a revision of lane function at the real-time view to set the red line at the edge of bonnet and middle of screen



Set up a favorite



Return to main menu



Save screen captures



Rear view screen

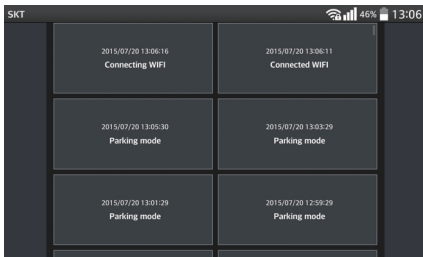


Front view screen



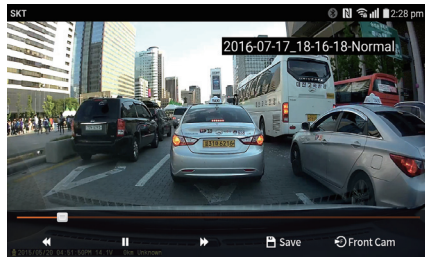
Watch saved front/rear images

■ Front/Rear Image Playback, Backup



List of Playbacks

- Tap on play button to navigate to playback list.
- List of playback shown in order of time.
Choose the one you want to watch.



Front/Rear Image Playback, Backup

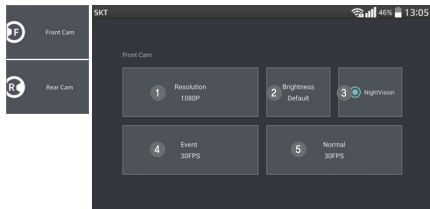
- Choose a video clip on the list to watch the image.
- Use R and F button to switch one screen to another.
- Use backup button to save the image on the smartphone.
The file is saved under (/storage/emulated/0/DCIM/IROAD)

 Save Backup button

 Rear Cam R button - Rear view playback

 Front Cam F button - Front view playback

Settings - Camera, Time



Setting - Camera

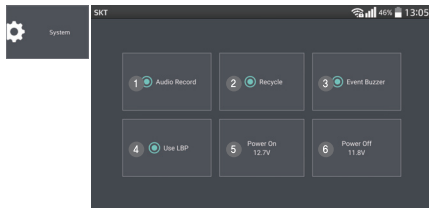
- 1 Front/Rear camera resolution
- 2 Brightness
- 3 Night Vision On/Off
- 4 Frame setting for event(impact, parking, motion) recording
- 5 Normal recording frame setting



Setting - Time

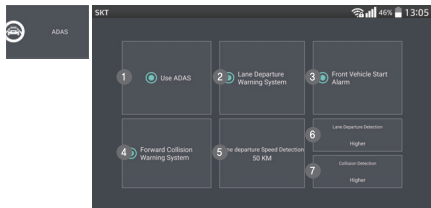
- 1 Time interval for automatic rebooting
The device automatically reboots at the set time.
(Untick the box to deactivate automatic reboot.)
- 2 Summer time On/Off
- 3 GMT setting

■ Settings - System, ADAS



Setting - System

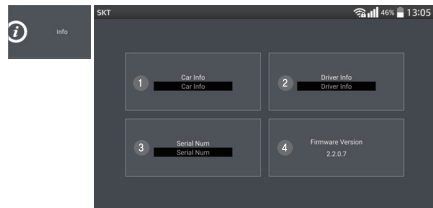
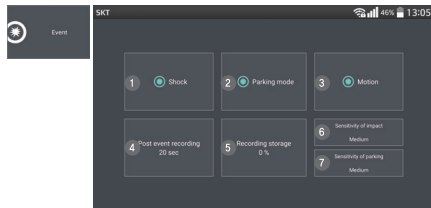
- 1 Audio recording On/Off
- 2 Rewriting On/Off
- 3 Event Buzzer On/Off
- 4 Tick on a voltage control then the power is cut off at the set voltage point. Power is turned on at the set voltage.
 - Recommended to use voltage cut-off function for the safety of your car battery
- 5 Power On setting
- 6 Power Off setting



Setting - ADAS

- 1 ADAS Function Turn On/Off
- 2 LDWS Turn On/Off
- 3 FVDW Turn On/Off
- 4 FCWS Turn On/Off
- 5 Speed of Lane Departure – Select 50, 60, 70km/h
- 6 Sensitivity of LDWS – Select low, basic, high
- 7 Sensitivity of FCWS – Select low, basic, high

■ Settings - Event, Info



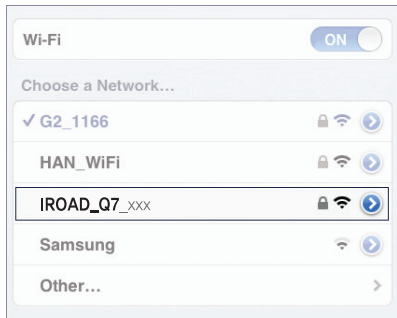
Setting - Event

- 1 Shock On/Off
- 2 Parking mode On/Off
- 3 Motion On/Off
- 4 Setting recording time after event occurs
- 5 Saving memory allocation – Allocate memory capacity to normal and event folder. Once the ratio is set, reboot the device and format the memory card.
- 6 Impact sensitivity setting
- 7 Parking sensitivity setting

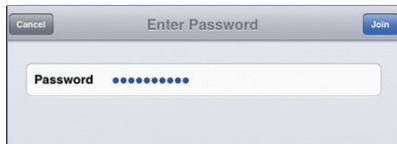
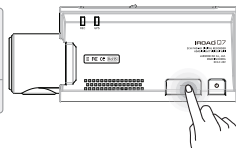
Setting - Info

- 1 Car Info
- 2 Driver Info
- 3 Serial Number
- 4 Firmware Version

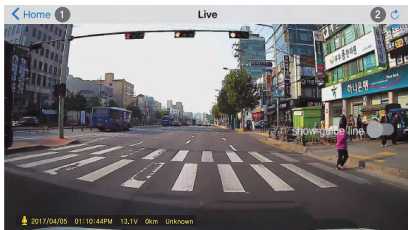
How to Connect – Apple iOS



1. Turn on Wi-Fi function of smart device.
2. Select "IROAD_Q7_XXXXXX" in the list.
3. Write [qwertyuiop] in the password box and touch the "Join" button.
(The password is on the second row of the keyboard.)
4. Press the Wi-Fi registration button of product to activate register standby mode. (Voice guidance)



■ Front/Rear Real-time Image and Main Menu



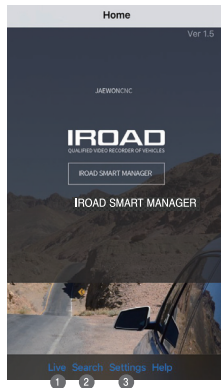
Front/Rear real-time image

– Run the application to watch front/rear real time image

Tap on the top right icon  to watch front/rear playback

Tap on the top left icon  to return to main screen

– Touch a revision of lane function at the real-time view to set the horizontal line at the edge of bonnet and set the vertical line at the middle of screen,



① Real time image can be viewed

② Play recordings

③ Tap on settings button to change settings using Smartphone
– The device reboots when the settings is changed and return to main menu.

List of Recordings, Front/Rear Recordings Playback, Save

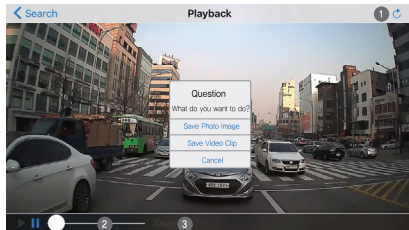
< Home	Search	Q
2015/11/18 03:19:02	Normal	>
2015/11/18 03:19:45	Normal	>
2015/11/20 16:35:01	Normal	>
2015/11/20 16:36:10	Normal	>
2015/11/20 16:36:20	Wi-Fi Connected	>
2015/11/20 16:47:06	Wi-Fi Connected	>
2015/11/20 16:47:11	Wi-Fi Connecting	>

List of recordings


Tap on list of recordings button to navigate to playback screen,

The list is shown in order of time

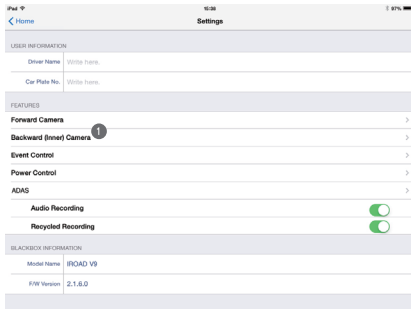
Choose the one you want to watch



Front/Rear recording playback and save

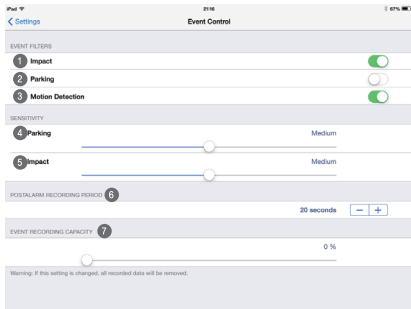
- 1 Tap on top right icon  to switch from front view image to rear view.
- 2 Playback bar
- 3 "Save" button is shown when playback is paused.
Tap on "Save" button then it navigates to backup recording data screen.
Choose the saving type then save the data.

■ Settings - Camera/Event Settings



Front/Rear camera settings

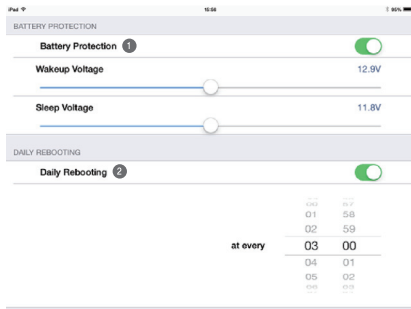
- ① Adjust frame and brightness of image



Event settings

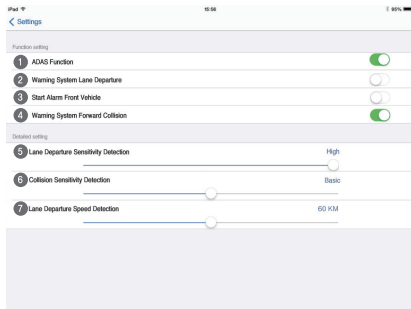
- ① Impact detection On/Off
- ② Parking mode detection On/Off
- ③ Motion detection On/Off
- ④ Parking mode sensor sensitivity
- ⑤ Impact detection sensor sensitivity setting
- ⑥ Recording time setting after event occurs
- ⑦ Saving memory allocation – Allocate memory capacity to normal and event folder. Once the ratio is set, reboot the device and format the memory card.

■ Settings - Power Control/ADAS



Voltage control and restart

- 1 Tap on "On" button, then the power is automatically cut off at the set voltage and the power is turned on at the voltage.
- 2 Auto reboot timer setting
(The device reboots at preset time.)
(Untick a box on the timer setting to deactivate it,)



ADAS

- 1 ADAS Function turn On/Off
- 2 LDWS turn On/Off
- 3 FVDW turn On/Off
- 4 FCWS turn On/Off
- 5 Sensitivity of LDWS – Select low, basic, high
- 6 Sensitivity of FCWS – Select low, basic, high
- 7 Speed of Lane Departure – Select 50, 60, 70km/h

■ Product is not working

1. Recheck if power cable is connected.
2. Check whether the authentic power cable is connected.
3. Make sure constant power cable is connected to correct fuse.
(professional installation is recommended)

■ Unable to run playback

1. Recordings can be played using a dedicated viewer and IROAD app on smartphone.
2. Some player does not support images from the rear camera.
3. If error occurs on recordings, contact to After Sale Service.

■ Unable to run rear camera recordings

1. Rear images are shown on the dedicated viewer or via IROAD app on smartphone. Install a dedicated pc viewer to run playback.
2. If error occurs, tune off power, disconnect rear camera cable, then reconnect and try again.

■ The quality of recorded video is not good

1. Check if there is any dust or dirt on front and rear camera lenses.
2. If windscreen is tinted, it may reduce video quality.
3. Tinted windscreen, backlight may reduce quality of video.

■ No power when engine is off (After long term parking)

1. Power will be disconnected by safety guard voltage if it goes down below set up voltage.
2. Battery discharging period might be shorten by battery condition or outside temperature.

■ Video is not recorded at all

1. Make sure recorder is powered on
2. Make sure SD card is inserted correctly
3. Format memory card and try again

■ PC cannot find memory card

1. Check if card reader is faulty
2. Insert a card reader onto other usb port on PC
3. Using USB multiport or assembled computer might have problem with reading USB

■ The device is unable to recorded. Power cannot be turned on

1. The device is turned off when engine is off given the cable is connected to a cigar jack
2. Connecting to uninterrupted power cable is recommended in order to use parking mode (ignition is off)

IROAD™ Q7

www.iroadkr.com



A CLASS DEVICE
(Official telecommunication Device)
MSIP-REM-JWW-IROADQ7